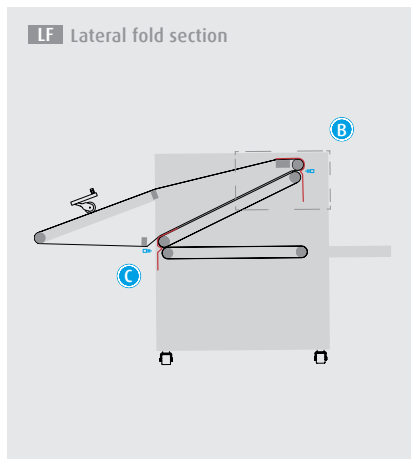




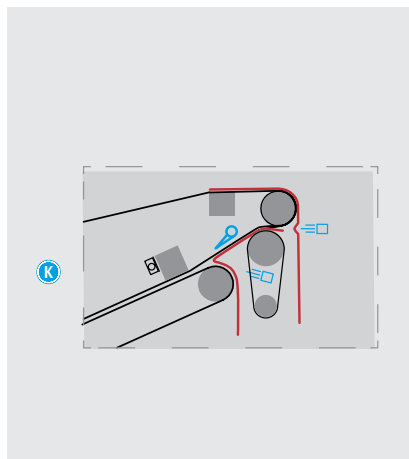
## JENSEN X3 & JENSEN XW3

A basic, compact, multi-purpose folder with integrated stacker for stable performance on a wide variety of linen types

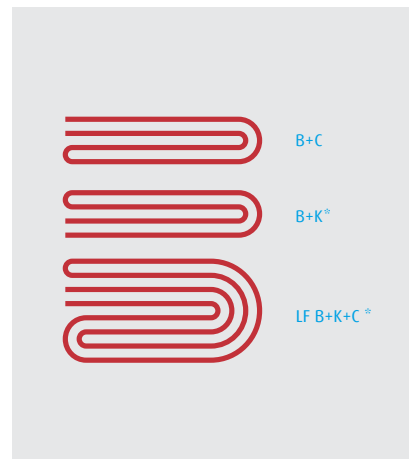




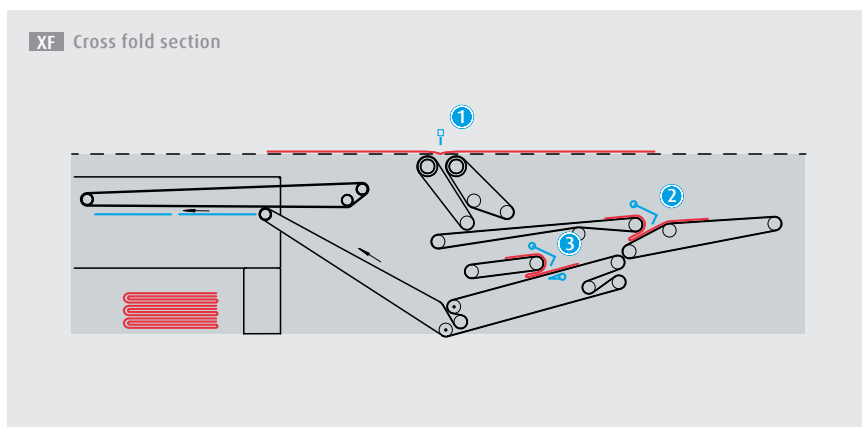
Configuration with two lateral folds



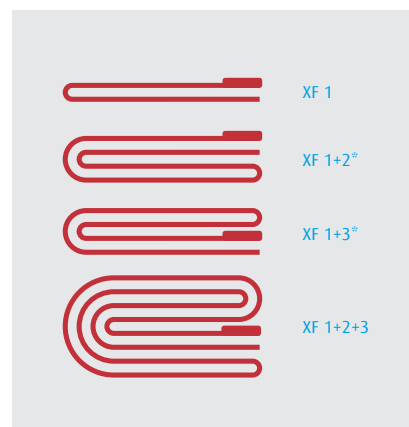
Optional configuration with three lateral folds



Possible lateral folds



Standard cross fold section with integrated stacker



Possible cross folds

## Summary

The **JENSEN X3** and **JENSEN XW3** are a line of compact folders designed for extremely reliable folding performance, even in mixed production. It can handle all kinds of flatwork from sheets and duvets to table linen and small piece items. It supports 1 lane operation for large pieces and 2 or 4 lanes for small pieces. All lateral folds are performed by air blast, and all cross folds are performed by knife and reverse conveyor for stable and high quality folding performance. The stacker has been integrated into the crossfold section of the machine, reducing the equipment's footprint. Additionally, it can be combined with a small piece folder and/or additional external stackers to make a multi-purpose ironer line. The result is a very versatile and reliable folder that offers excellent value for money.

The **JENSEN XW3** has the additional advantage of a 1 meter (39") wide cross fold opening – compared to the **JENSEN X3**'s 800 mm (31") cross fold opening. This allows the **JENSEN XW3** to handle sheets up to 4 meters (158") long.

### Highlights

- Excellent folding marks and linen support for high folding quality in mixed production of light and heavy linen;
- Two lateral folds (third K-fold, optional);
- Operating speed up to 60 m/min (197 ft/min) that automatically

adjusts to ironer speed;

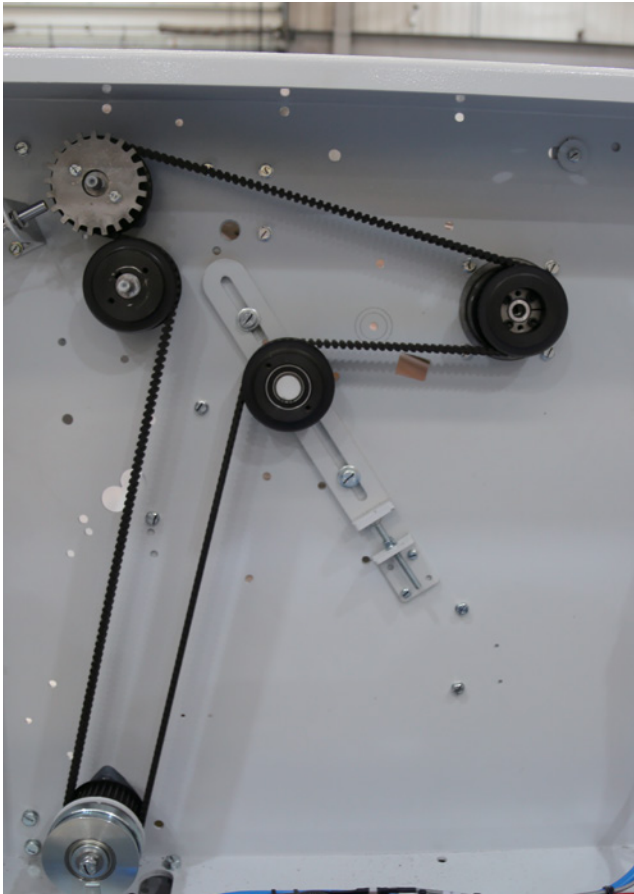
- Toothed belt drive for improved folding speed, accuracy and easier maintenance;
- Working widths: 3000, 3300 and 3500 mm (118", 130", 138");
- Max. stacking height 350 mm (14");
- Option: detect and bypass misshaped sheets before cross fold;
- Option: anti-static bar.

### Space saving integrated stacker

- **JENSEN X3**: Max. stacking size: 800 \* 600 mm (31.5 \* 24", width \* length);
- **JENSEN XW3**: Max. stacking size: 1000 \* 600 mm (39 \* 24");
- Max. stacking height 350 mm (14").

## Incoming

The incoming bridge is equipped with a measuring wheel and photocell to measure the exact length of the linen as it enters the folder to guarantee folding accuracy.



Compared with chain drives, toothed belt drives provide more precise folding at high speeds. The belt also has the advantage of not requiring oil, quieter operation, and easier maintenance.



All cross folds are completed by mechanical knives and reverse conveyors, providing complete support for the linen to ensure stable operation on a wide variety of linen types.

## LF – Lateral fold section

The JENSEN X3 / JENSEN XW3 provides one to two lateral folds as well as optional bypass. The option for a third lateral fold is available.

The first lateral fold **(B)** is performed by air blast between pinch rollers, allowing the linen to hang freely from the top of the folder's conveyor. This technique has proven to be simple and reliable, providing a high finishing quality as the linen is naturally stretched by gravity. Sandwich belts provide stable support on both sides of the linen guiding it to the C fold. They also gently press and flatten the linen.

The C lateral fold **(C)** is performed by air blast between pinch rollers. The air blast pressure can be adjusted according to linen thickness. Thanks to the sandwich design, optimum friction and an excellent folding quality is ensured.

The optional lateral fold K **(K)** can be added after the B fold, resulting in 3 potential lateral folds. It is performed by air blast between sandwich conveyor belts.

### Bypass systems

Two bypass systems in the lateral fold section allow you to perform bypass drop of large pieces to the rear table, or to bypass small pieces before the cross fold section.

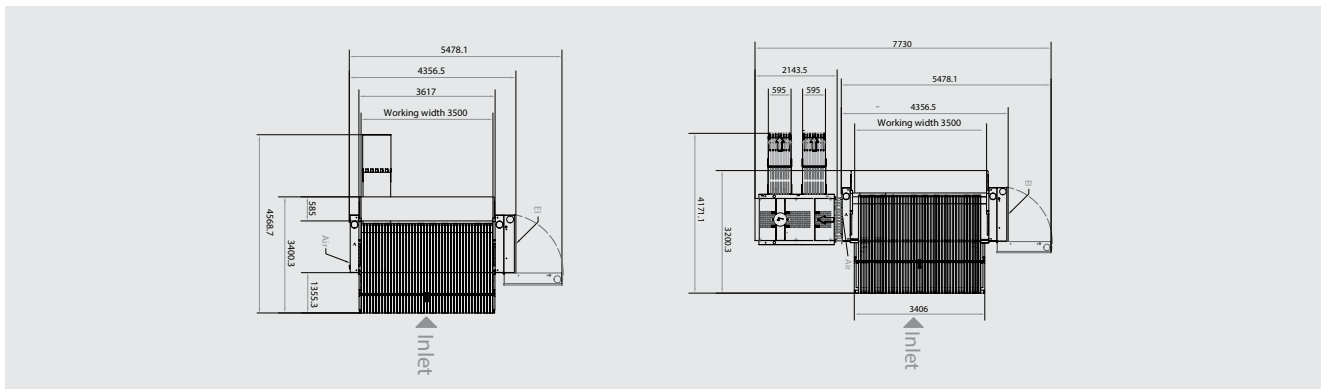
## XF – Cross fold section

The JENSEN X3 / JENSEN XW3 has a highly reliable cross fold design for simple and reliable 1-lane operation, performing 1, 2, or 3 cross folds as half folds. All cross folds are performed by knife and reversing conveyors that provide perfect support under the linen to ensure excellent folding quality of both light and heavy items.

The first cross fold is performed by a knife between sandwich belts. The belts guide the linen down, gently pressing and flattening the linen. **(1)**

The second and third cross fold are performed by a reversing conveyor and a mechanical knife which ensure a stable transport of the linen. **(2) (3)**

The cross fold section operates on one motor with four easily accessible clutches. Thus, all belts transport the linen at the same speed without requiring any individual belt speed adjustments.



Layout and configurations of JENSEN X3 with internal single stacker and external Twin stacker.

## Space saving integrated stacker

The standard cross fold section of the machine is equipped with an internal built-in drop stacker, resulting in a smaller footprint for your flatwork. The folded linen arrives from the cross fold section and stops on top of two flaps which open rapidly dropping the linen onto the stack. When the pre-selected number has been reached, the stack is ejected to a delivery conveyor. As an alternative to the standard built-in stacker, the stacker can be located externally as a JENSEN S5, JENSEN SW5 or Twin model.

### Features

The delivery conveyor is supplied with a drum motor giving a smoother and steadier transport of the stacks. The inlet on the stacker is spring mounted to secure a uniform and good stacking quality of thick as well as thin linen.

### Application

The ideal solution for efficient, high-speed stacking of folded linen.

- JENSEN X3: Max. stacking size: 800 \* 600 mm (31.5 \* 24", width \* length);
- JENSEN XW3: Max. stacking size: 1000 \* 600 mm (39 \* 24");
- Max. stacking height 350 mm (14").

### Installation

JENSEN is pleased to assist you in planning your laundry by providing excellent advice, layouts and technical data. Authorised JENSEN distributors or JENSEN engineers should carry out the installation to ensure that it is performed correctly.

### Service

In addition, JENSEN provides an extraordinary after sales service through a worldwide network of highly qualified Sales and Service Centers and distributors, all with their own maintenance and spare parts services.

### Call us...

JENSEN provides a complete range of heavyduty equipment for the laundry industry, delivered and installed according to your specifications. Please do not hesitate to contact us for further advice and information, or visit

[www.jensen-group.com](http://www.jensen-group.com)

### Local contact



[www.jensen-group.com](http://www.jensen-group.com)

Explore our equipment on  **YouTube**  
[www.youtube.com/jensengroupcom](http://www.youtube.com/jensengroupcom)